

PLAN OF PROPOSED SUBDIVISION
 SHOWING SUBDIVISION OF ALL OF
 PARCEL 'A', MUNICIPAL BUFFER MB5,
 MUNICIPAL RESERVE MR1, LOT 22 &
 LOT 25, BLOCK 96, PLAN 102000856;
 LOTS 1-3, BLOCK 5, PLAN E5923;
 AND SUBDIVISION OF PART OF
 LOT 23, BLOCK 96, PLAN No. 102000856;
 PARCEL 'B', PLAN No. 101680837;
 PARCEL 'M', PLAN No. 101573805;
 PARCEL 'K', PLAN No. 101539942;
 PARCEL 'Q', PLAN No. 101958723;
 NW 1/4 SEC. 30 - 43 - 16 - 3
 BATTLEFORD, SASKATCHEWAN

PRELIMINARY PLAN COMPLETED
 ON JUNE 14th, A.D. 2010,
 BY: Michael J. Wawchuk, S.L.S.
 OWNERS APPROVAL:

BATTLEFORD WEST PROPERTIES LTD.

LEGEND:
 PORTION TO BE SEVERED IS BOUNDED BY
 A HEAVY DASHED LINE, AND CONTAINS 6.40
 HECTARES MORE OR LESS.
 MEASUREMENTS ARE IN METRES AND DECIMALS
 THEREOF, WITH AN ACCURACY OF ±1.0 METRES.
 SCALE: 1:2,500
 MINISTRY OF MUNICIPAL AFFAIRS,
 COMMUNITY PLANNING BRANCH:

Prepared by:

MERIDIAN SURVEYS LTD.
 P.O. BOX 548, NORTH BATTLEFORD, SASK.
 S9A 2Y7 OUR FILE: W07091 (PHASE III)
 DRAWN BY: B. Gristwood
 PH: 445-8148 FAX: 445-1545

REVISED: JUNE 14, 2010
 AMENDED LOT SIZES IN BLOCK 97
 REVISED: AUGUST 25, 2010
 AMENDED SIZES OF BLOCKS 96 & 97
 REVISED: OCTOBER 7, 2010
 ADDED OH POWERLINE

REVISED: NOVEMBER 5, 2010
 AMENDED LOT SIZES IN BLOCK 97
 REVISED: APRIL 7, 2011
 AMENDED SIZE OF LOTS 27-30
 ADDED LOTS 33, 34, 35 & MR5
 REVISED: APRIL 21, 2011
 ADDED PLAN 102059232 (Lots 31 & 32)

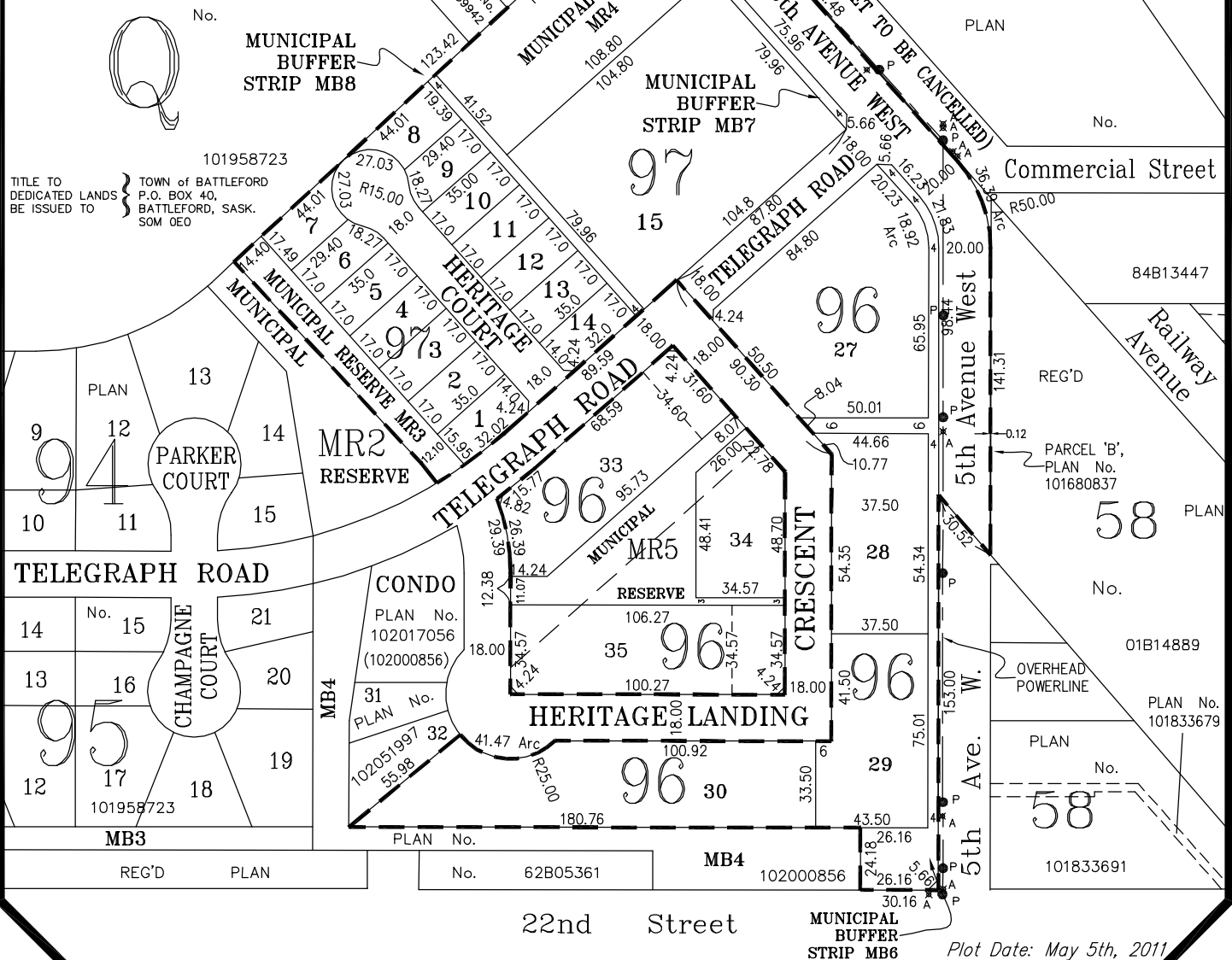
REVISED: APRIL 29, 2011
 ADDED CUT-OFF CORNERS

REVISED: MAY 5, 2011
 ADDED STATEMENT FOR
 STREET CANCELLATION

AREA BREAKDOWN:

MR3:	±0.15 ha.	(3.8%)
MR4:	±0.46 ha.	(11.5%)
MR5:	±0.25 ha.	(6.3%)
MB6:	±0.20 ha.	(5.0%)
MB7:	±0.03 ha.	(0.8%)
MB8:	±0.05 ha.	(1.3%)
RAW LAND:	±4.00 ha.	(100.0%)

MB5 & MR1:



22nd Street

MUNICIPAL
 BUFFER
 STRIP MB6

Plot Date: May 5th, 2011