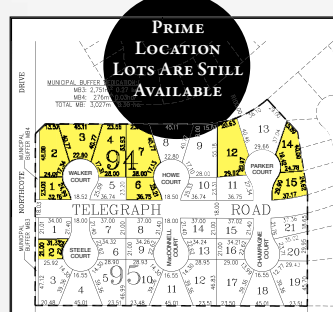


**HISTORIC
LOCATION
MODERN
LIVING**

ORIGINALLY PROPOSED IN 1911 THE NEW BATTLEFORD WEST IS A HERITAGE THEMED 130 ACRE PLANNED COMMUNITY COMBINING OPEN SPACES, DESIGN CONTROLLED RESIDENCES AND CONVENIENT NEIGHBOURHOOD SHOPPING.



AERIAL VIEW OF BATTLEFORD WEST



UNDERGROUND POWER, WATER & SEWER INSTALLATION COMPLETE

TELEGRAPH HEIGHTS IN BATTLEFORD WEST

- All lots have a view
- Large lot sizes, some with walk-out basements
- Town of Battleford municipal sewer and water system installed
- Decorative streetlights along Telegraph Road
- Sidewalks throughout
- Heritage themed developer fencing along the South boundary
- Design guidelines and building control restrictive
- Walking distance to downtown Battleford
- Elementary schools nearby
- Fully serviced lots starting from \$62,500

A GLIMPSE INTO THE HISTORY OF BATTLEFORD WEST

October 9, 1912

Dear Sir,

Your property "Battleford West is beautifully located on the banks of the Battle River and in close proximity to the town, being only a fifteen minute walk from the Post Office, Court House and Land Titles Office, which is the centre of town.

I have no hesitation in recommending this as a high-class business and residential property, and at the prices quoted in your price list, investors should make good profits in a very short time.

Yours truly,
A. Champagne, M. P.



TELEGRAPH HEIGHTS SHOWHOMES BY SPEC



SOUTH BOUNDARY FENCING



BATTLEFORD WEST

BATTLEFORD WEST is located 1km south of the Yellowhead Highway at the two primary accesses into the Town of Battleford. The residential lots offer spectacular south and west facing vistas of the Battle River Valley.



Town Hall / Opera House in Battleford Saskatchewan. Built in 1912.