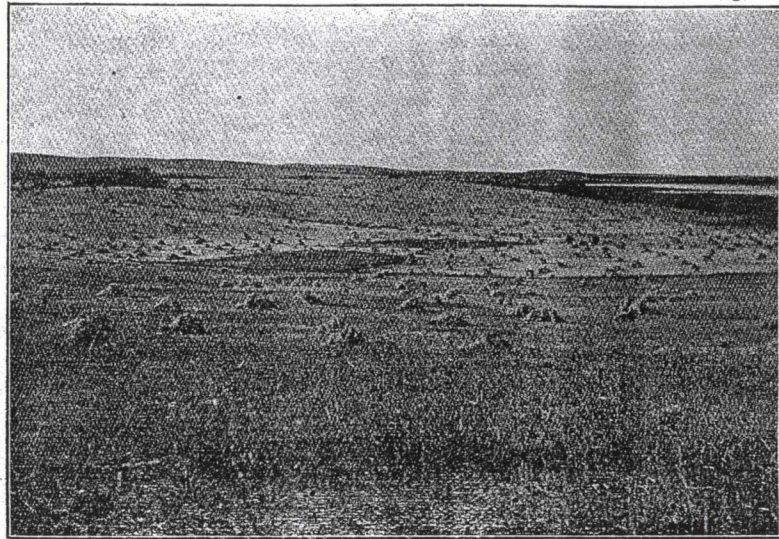


Battleford's Farming District

Where Every Prospect Pleases
Where Good Soil and Favorable Weather Conditions
Combine to Produce an Uninterrupted Succession
of Good Crops



FARM SCENE NEAR BATTLEFORD

MUCH has been written and much said concerning the advantages of many farming districts in Western Canada, but the Battleford district stands out in undisputed prominence as an ideal district, with its thousands of acres of fine farming land, and offers wonderful opportunities to the farmer who is seeking a new home. A grand park-like country, beautifully dotted with groves and luxuriant meadows, it is pre-eminently suited for both wheat raising and mixed farming. The land is fertile, not only because for uncounted centuries it has lain untilled, but because when Nature deposited the surface soil on a foundation of clay, she collected just the ingredients that insure rapid growth of farm crops, and the best defence against natural enemies.

The winters in the Battleford district are milder than in most parts of the West; snow seldom if ever exceeds seven inches: good sleighing usually prevails during the entire winter. The summers are perfectly delightful and not excessively hot, whilst the temperature may reach 90 and 95 degrees during a short period of the day. The atmosphere is dry, and the nights are invariably cool.