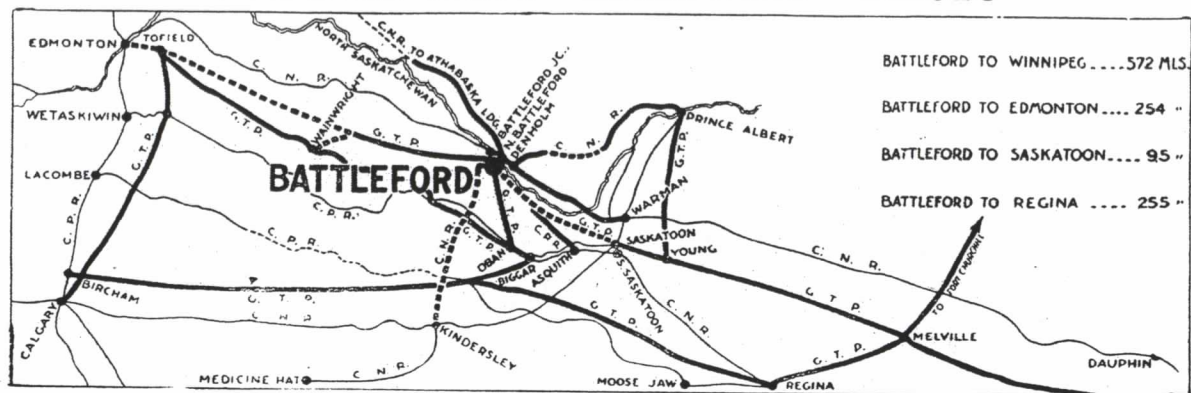
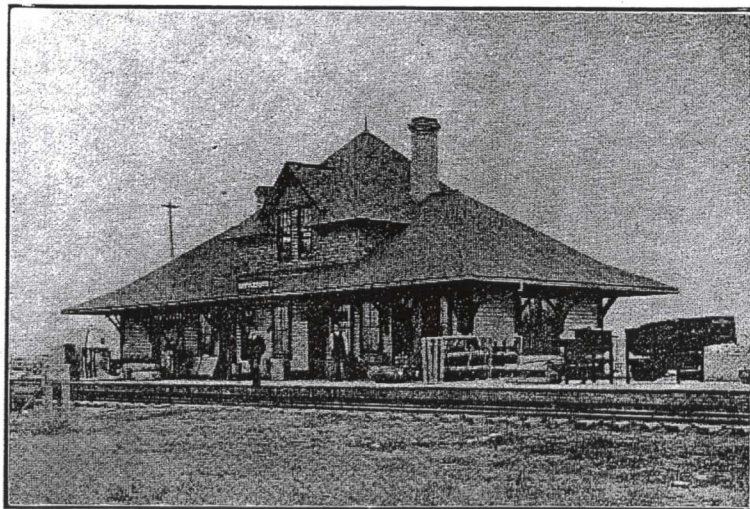


## BATTLEFORD'S RAILWAY FACTS



OFFICIAL MAP, SHOWING THE RAILWAY SITUATION AT BATTLEFORD AS ON SEPTEMBER 1st, 1912



CANADIAN NORTHERN RAILWAY DEPOT

Battleford is served by the Canadian Northern Railway and in addition to this connection with the main line of the Canadian Northern, communication is afforded with the great north country by means of a Canadian Northern line to Peace River country (partly completed) and a line of the same system to Prince Albert now under construction and ready for steel. The Grand Trunk Pacific Biggar-Battleford line has just been completed. The Grand Trunk Pacific Battleford-Tofield and Edmonton line is being constructed with all possible speed.

The Canadian Pacific Railway has secured a charter to build from Asquith into Battleford, and a portion of the line is already constructed.

Another most important line is the Canadian Northern Battleford-Kindersley-Medicine Hat line. Charters are granted for this line, bonds guaranteed, and much right of way already approved.