

MUNICIPAL FLOUR MILL AND ELEVATOR

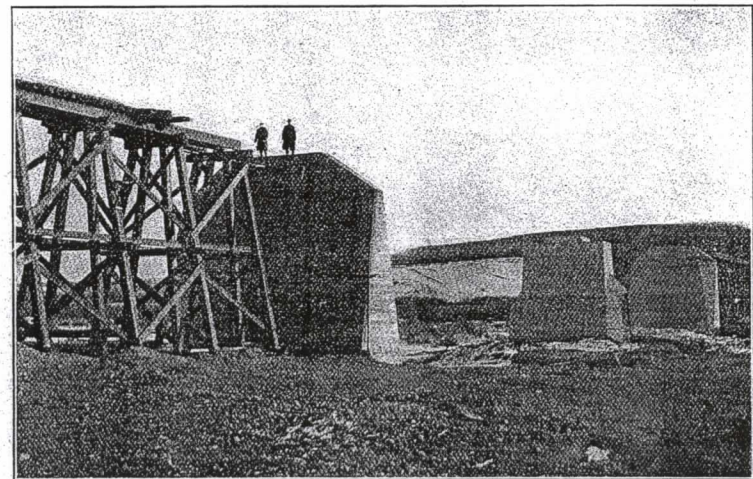
No Town in the Prairie Provinces of Canada has brighter prospects than

## BATTLEFORD

The conditions governing Battleford's prosperity are daily increasing in number and influence. The keystone of the town's present commercial activity and solid foundation was laid when Canada's great transcontinental line, the Grand Trunk Pacific, decided to tap this beautiful centre with three most important lines, namely Biggar-Battleford line, Battleford-Saskatoon line and the Battleford-Tofield-Edmonton line, two of which lines are now rapidly nearing completion. The Canadian Pacific Railway are not slow to grasp the situation as to Battleford immediately becoming

a great railway centre and are therefore building in from Asquith. The Canadian Northern Railway are further recognizing the town's importance and wonderful resources, and desiring to increase their business and retain a fair share of the developing traffic, will construct a line in the very near future now known as Battleford-Kindersley-Medicine Hat line, for which line a charter has been granted and much of the right-of-way approved. These various lines, with those radiating to the north, are the making of the town as one of the most important railway centres in Western Canada, enjoying as it will in the immediate future transportation facilities by rail and water that will make her a mighty rival of the largest cities in the Canadian West.

Battleford's greatness is assured, and her citizens---British and American---have firm confidence in her future prosperity and industrial and social progress.



GRAND TRUNK PACIFIC CONSTRUCTION WORK  
BATTLEFORD-EDMONTON LINE