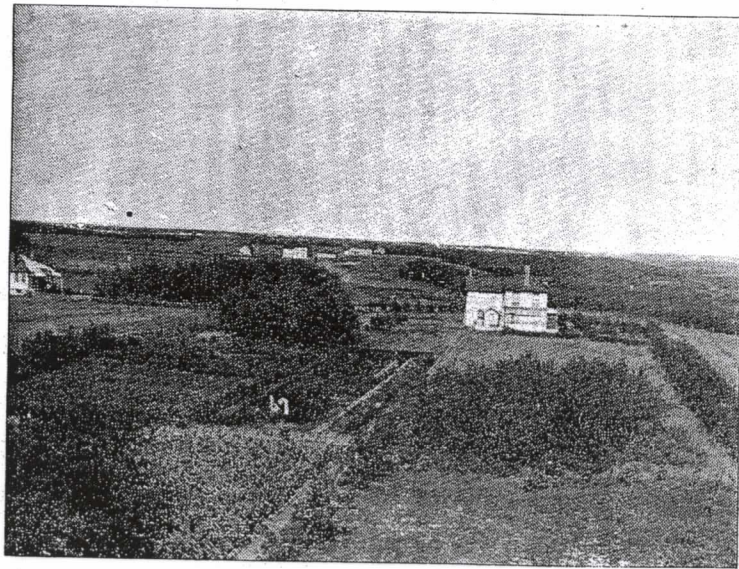


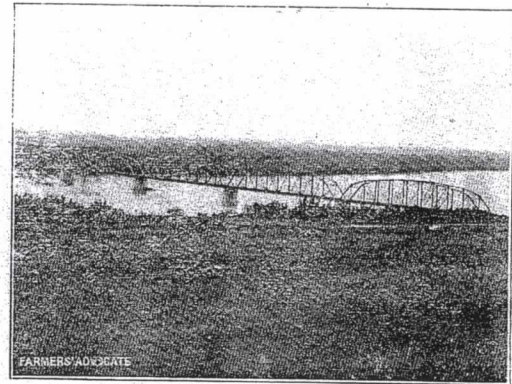
The snow blizzards of winter and the dust storms of summer, not infrequent in many parts of the Canadian West, are never experienced here, owing to the protection of a mountain range known as the Eagle hills. The beautiful park country and the two lordly rivers, the Saskatchewan and Battle, no doubt largely account for the absence of bad storms either winter or summer, as such are practically unknown in the Battleford district.

In mixed farming, poultry raising, market gardening and the growing of all kinds of vegetables it is our proud boast that Battleford stands absolutely unapproached in the Province of Saskatchewan.

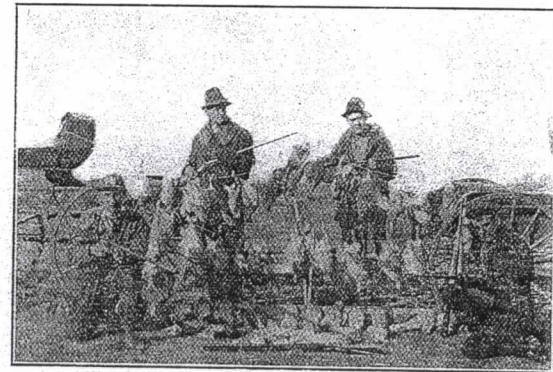
Pure drinking water in abundance is obtainable in all parts of the district at a depth of from 10 to 30 feet.



SCENE ONE MILE FROM BATTLEFORD



TRAFFIC BRIDGE ON THE SASKATCHEWAN RIVER AT BATTLEFORD



THE BATTLEFORD DISTRICT IS A HUNTER'S PARADISE