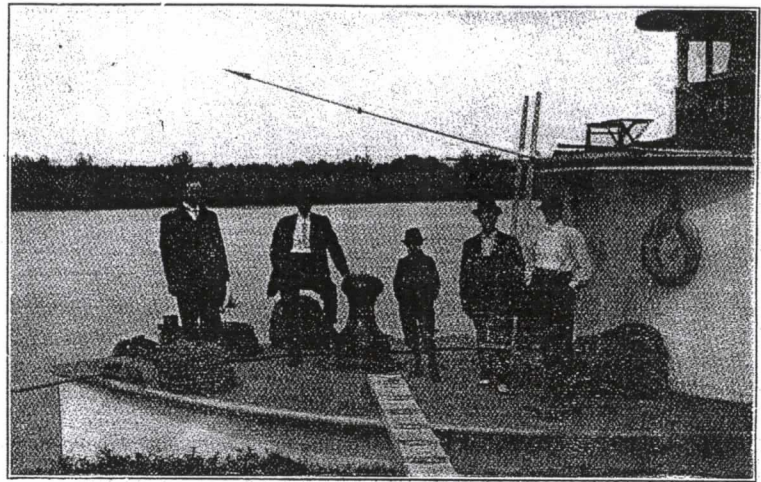
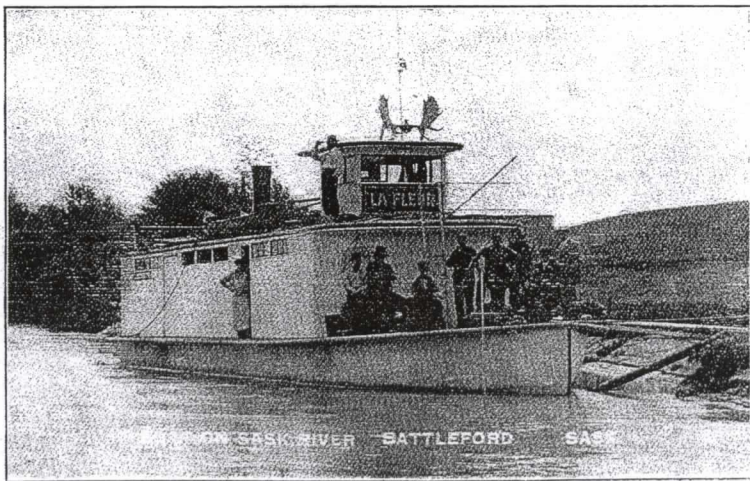


Of vast importance to Battleford is the
coming water transportation



GOVERNMENT RIVER SURVEY BOAT ON THE
SASKATCHEWAN AT BATTLEFORD



All recent engineer's reports prove conclusively that the matter of making the Saskatchewan river navigable from Edmonton to Winnipeg is assured, and already much of the preliminary work has been done. In this distance of 900 miles there are only two towns situated on the river, namely Prince Albert and Battleford, and here the railways will meet the water transportation, with the resultant building up of two great river ports.