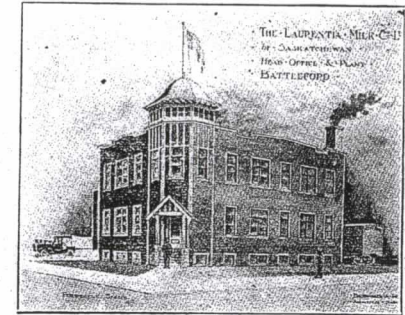


## Battleford's Wholesale and Industrial Activity

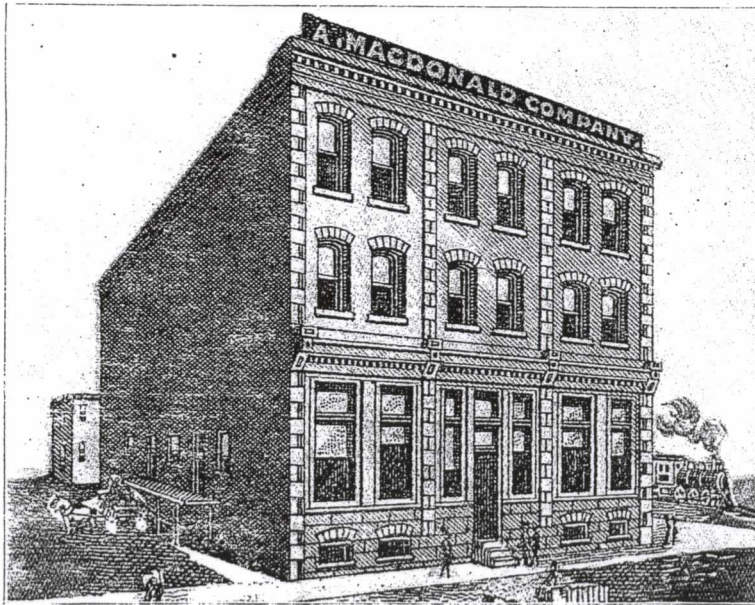
The A. MacDonald Co., wholesale grocers, have completed a wholesale warehouse here, and will make Battleford their headquarters for a large district.

Other local industrial concerns are the Eby Foundry Co., the Battleford Ironworks Co., a Flour Mill, Lumber Mill Brick and Tile plant, Planing Mill, Steam Laundry, etc.

Most of these industries have opened up during the present year with the advent of the railways, and prospects point to a much greater industrial development next year, several wholesale concerns particularly having signified their intention of opening new branches here.



FACTORY OF THE LAURENTIA MILK CO



BATTLEFORD'S PIONEER WHOLESALE HOUSE

## The Laurentia Milk Co.

One of the new industries is that of the Laurentia Milk Company of Saskatchewan, capitalized at 400,000 dollars. The head office and plant for the province have been established in Battleford.

This company will feature exclusively homogenized cream and milk, as well as butter and ice cream.

The advent of this concern has already exercised a stimulating effect upon the surrounding farming district, and has given a strong impetus to the profitable dairying industry.